



PUNTA LAGUNA

LUXURY APARTMENTS

CORASOL, RIVIERA MAYA



The Ultimate
in Luxury Living
on the Riviera Maya

GETTING TO CORASOL

While Corasol feels like a world of its own, **getting here is simple**. Cancun International Airport — an easy 40-minute drive from Corasol — is served **by all major airlines with many offering direct flights from major U.S. cities**.

Cancun International Airport
40 minutes

**Coastal Resort Town
Playa del Carmen**
8 minutes

Xcaret Eco Water Park
15 minutes

**Tulum Beaches &
Mayan Ruins**
50 minutes

**Cenote Chaak Tun
Subterranean Caves**
20 minutes

Coba Mayan Ruins
1.5 hours



RIVIERA MAYA

JOURNEY TO THE JEWEL
OF THE MEXICAN CARIBBEAN

Riviera Maya has quickly become one of North America's most sought-after destinations. **Bordered by lush jungles and white sand beaches on the Yucatan Peninsula,** this enchanting paradise is also located minutes from iconic archaeological attractions dating back to the Maya civilization and **UNESCO World Heritage Sites.**





INTRODUCING CORASOL

Claiming a prized, pristine stretch of the Riviera Maya coastline, **Corasol** represents a stunning new vision for exceptional resort living and legacy homeownership, all artfully sculpted into the landscape by **Sordo Madaleno** and **CUAIK Arquitectos**. Flawless white sand beaches, tranquil lagoons and a verdant valley of native jungle flora set the stage for this exceptionally private, gated residential resort community on the Caribbean Sea.



Main Access



Distance
to the beach



10 minutes walk

3 minutes in golf cart

UBICACIONES

- 1 Acceso
- 2 Palm Villas Estate Homes
- 3 The Village Resort & Residences
- 4 Costa Residences
- 5 Costa Beach Club
- 6 **Punta Laguna**
- 7 The Park
- 8 Huertos Orgánicos
- 9 Casa Club Gran Coyote

▲ Acceso Privado a 5ª Avenida

Mar Caribe



CORASOL

CORASOL OWNERS'S & RENTERS ACCESS TO:

Corasol Beach Area

Free Transportation from Punta Laguna to the beach. Parking, Dressing Rooms, Bathrooms. Concierge Service Upon Request: Beach Beds & Chairs Sun Umbrellas, Hammocks and Coolers.



1 Premium All Inclusive Beachfront Resorts

Access to purchase all inclusive day passes



Images are illustrative and the final product may vary without notice

**In progress*

CORASOL MEMBERSHIP ACCESS TO:

Costa Beach Club



CORASOL MEMBERSHIP ACCESS TO:

The Park



Gran Coyote Golf Course



Community Organic Gardens



*In progress

*In progress



Location of
Punta Laguna

A retreat within a resort experience

Immersed in a serene jungle landscape, Punta Laguna encompasses 12 acres of family-friendly, owner-exclusive amenities and activities. Its bright, modern residences offer breezy indoor/outdoor living spaces and sweeping views of the nearby, jungle lake and golf course.



PUNTA LAGUNA

LUXURY APARTMENTS

CORASOL, RIVIERA MAYA

- 344 apartments
- 4 buildings
- 8 elevators
- Parking Area



PUNTA LAGUNA

LUXURY APARTMENTS

CORASOL, RIVIERA MAYA

- From 2 Bedroom
- 2 Bathroom
- Living / Dining Room
- Kitchen
- Terrace

- Interior from: 70m² / 753 sqf
- Terrace from: 12m² / 129 sq ft
- Total from: 82m² / 882 sq ft





PUNTA LAGUNA

Experiences

- | | |
|------------------------|-----------------------|
| 1 . Motor Lobby | 11 . Firepits |
| 2 . Lobby | 12 . Hammocks |
| 3 . Zen Garden | 13 . Laguna Pool |
| 4 . Gym | 14 . Oasis Pool |
| 5 . Coworking | 15 . Laguna Pier |
| 6 . Yoga Area | 16 . Lounge Bar |
| 7 . Ventura Playground | 17 . Café / Lounge |
| 8 . Teens Hall | 18 . Paddle Courts |
| 9 . Kids Club | 19 . Pickleball Court |
| 10 . Barbecue Area | 20 . Reading Jungle |

*The project may be modified according to the needs of the development.

THE LOBBY CONCIERGE: YOUR “INSIDE CONNECTION” TO THE BEST PLAYA DEL CARMEN

Special Courtesy: set up of umbrellas, chairs, loungers and ice coolers at Corasol Beach Area.

Upon Request:

- Arrange airport transfers and ground transportations
- Book tours, excursions, spa service & massages
- Reserve tickets for shows
- Make dinner reservations
- Hire Babysitter, Housekeeping, Private Chef, Laundry Services

*Services upon request will depend on availability and has an additional cost.





PUNTA LAGUNA

LUXURY APARTMENTS

CD. RASOL, RIVIERA MAYA

Las imágenes presentadas son ilustrativas, el producto final puede variar y cambiar sin previo aviso de acuerdo a las necesidades del proyecto y del desarrollador.



Las imágenes presentadas son ilustrativas, el producto final puede variar y cambiar sin previo aviso de acuerdo a las necesidades del proyecto y del desarrollador.



PUNTA LAGUNA

LUXURY APARTMENTS

CORASOL, RIVIERA MAYA



Las imágenes presentadas son ilustrativas, el producto final puede variar y cambiar sin previo aviso de acuerdo a las necesidades del proyecto y del desarrollador.



PUNTA LAGUNA

LUXURY APARTMENTS

CORASOL, RIVIERA MAYA



Las imágenes presentadas son ilustrativas, el producto final puede variar y cambiar sin previo aviso de acuerdo a las necesidades del proyecto y del desarrollador.



Las imágenes presentadas son ilustrativas, el producto final puede variar y cambiar sin previo aviso de acuerdo a las necesidades del proyecto y del desarrollador.



PUNTA LAGUNA

LUXURY APARTMENTS

CORASOL, RIVIERA MAYA



Las imágenes presentadas son ilustrativas, el producto final puede variar y cambiar sin previo aviso de acuerdo a las necesidades del proyecto y del desarrollador.



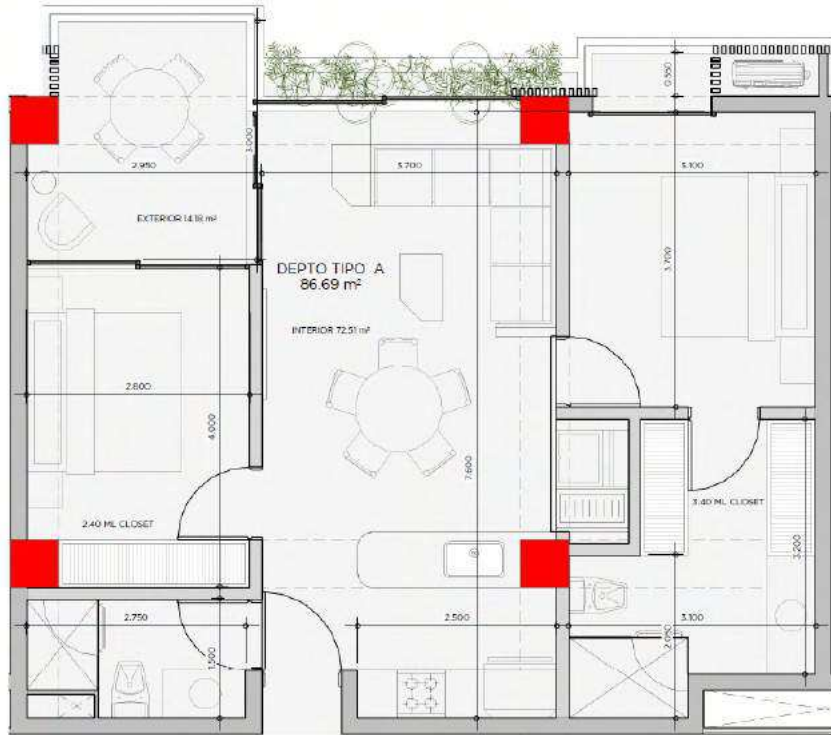
PUNTA LAGUNA

Condo interiors

- Interior flooring: Natural stone floor
- Balcony flooring: Chukum
- Apartment divisory walls: Paste
- Frames: Paste
- Color: Lynx
- AC: In each bedroom and living room
- Cable TV, internet and telephone ducts in each bedroom and living room (service activation to be done by owner).
- LED lights fixtures.
- Carpentry: closets and access door.
- Kitchen includes: Stone bar, cabinets and cupboards in wood finish, Hood, stove and stainless steel sink.
- Single sink and faucet with cold and hot water.
- Cooktop.
- Oven.
- Electric extractor hood.
- Bathroom sink and accessories: shower towel rail, paper holder, shower arm and sink with single lever faucet. Cold and hot water tap/faucet.

PUNTA LAGUNA

Type A



- Bedrooms: 2
- Bathrooms: 2
- Living / Dining Room
- Kitchen
- Terrace

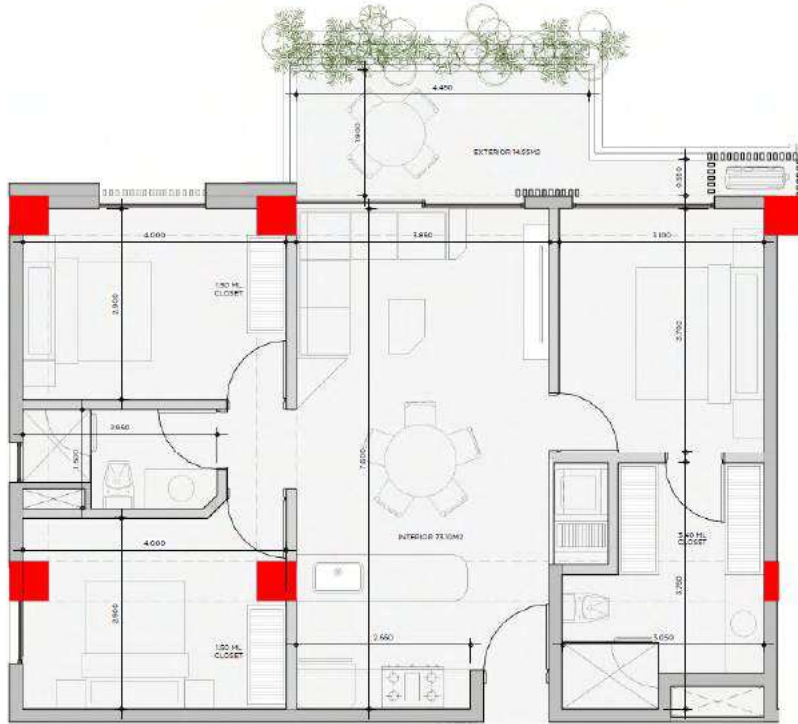
- Interior from: 70m2 / 753 sqf
- Terrace from: 12m2 / 129 sq ft
- Total from: 82m2 / 882 sq ft

PLANTA DEPTO TIPO A

ESCALA 1 : 50

PUNTA LAGUNA

Type B



- Bedrooms: 3
- Bathrooms: 2
- Living / Dining Room
- Kitchen
- Terrace

- Interior from: 90m² / 969 sqf
- Terrace from: 14m² / 150 sq ft
- Total from: 94m² / 1,119 sq ft

PLANTA DEPTO TIPO B

ESCALA 1:50

PUNTA LAGUNA

Type C



PLANTA DEPTO TIPO C

ESCALA 1:50

- Bedrooms: 3
 - Bathrooms: 3
 - Living / Dining Room
 - Kitchen
 - Terrace
-
- Interior from: 113m² / 1,216 sqf
 - Terrace from: 12m² / 129 sq ft
 - Total from: 125m² / 1,345 sq ft



Real Estate company financed by one of the most important corporate groups in Mexico, **Salinas Pliego family**.

- Prime level directive board with outstanding investment and development experience in real estate projects looking forward to provide the highest returns to partners and stakeholders.

- Working in partnership with the most prestige architects, building and contractor companies in the country.

Headquarters based in Santa Fe, Mexico City.

- Origina's business plan is realistically designed to reach the goal of becoming one of the largest real estate companies at national level, in the next 4 years.





CORASOL



corasol.mx

ventascorasol@originamx.com | +52 984 157 5556

Federal Highway 307 Cancun - Chetumal, Km 294 + 700,
Zip Code 77710, Solidaridad, Playa del Carmen, Quintana Roo, Mexico.