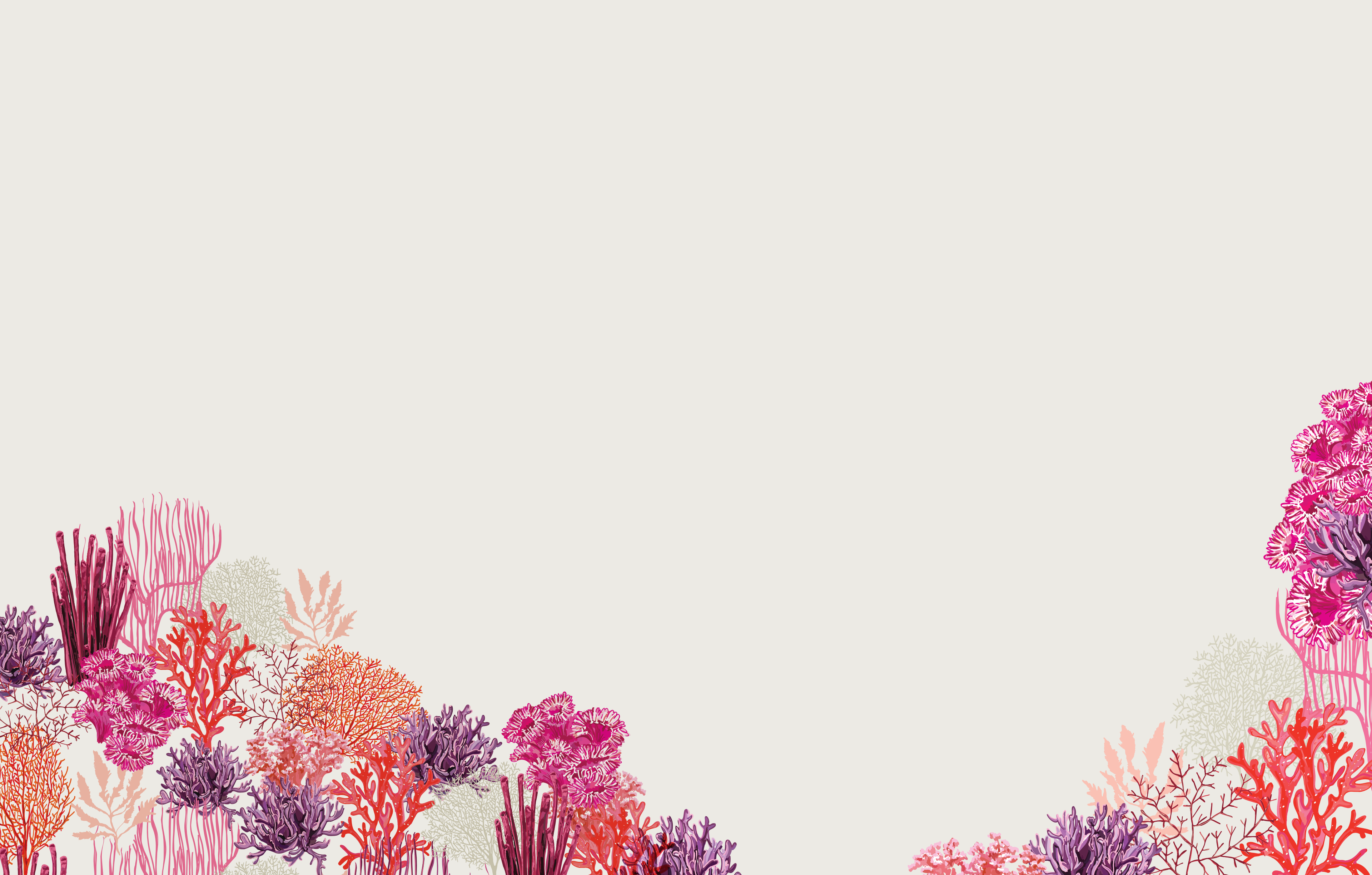




**THE RITZ-CARLTON
RESIDENCES**

POMPANO BEACH





AN OWNERS-ONLY LUXURY RESORT

Developed by Fortune International Group and Oak Capital, The Ritz-Carlton Residences, Pompano Beach are an unprecedented collection of magnificent luxury homes and amenities, with interiors and landscape concept design by Piero Lissoni®. Comprised of two striking shoreline towers designed by Luis Revuelta, situated on a sprawling property spanning the waterfronts—from Ocean to Intracoastal—The Ritz-Carlton Residences, Pompano Beach give homeowners direct access to both a private Beach Club and private Yacht Club.

With a comprehensive array of extraordinary private amenities, staffed and serviced by the world's preeminent luxury flag, The Ritz-Carlton Residences, Pompano Beach offer a transformative lifestyle and incomparable experiences.

LEGENDARY LIVING

Meticulous, personalized service provided by exemplary staff adept at anticipating and fulfilling the expressed and inferred wishes and needs of residents, consistently exceeding expectations—this is what distinguishes The Ritz-Carlton experience globally and elevates The Ritz-Carlton Residences, Pompano Beach to a truly matchless offering.





MASTERFUL DESIGN

Since establishing his first multidisciplinary practice in Milan more than 35 years ago, Piero Lissoni has been at the forefront of top-echelon global contemporary design and architecture. Today, with studios on both sides of the Atlantic, he is peerless in experience, influence, and eminence. As much a fine artist as he is an architect and designer, Lissoni's holistic, contemplative, rigorous approach has placed him in a class of his own and has earned him accolades and awards the world over as well as a sterling reputation for executing his craft at the highest level of sophistication and quality.



AN ENVIABLE LOCATION, A SINGULAR PROPERTY

The Ritz-Carlton Residences, Pompano Beach offer an experience which cannot be found elsewhere. No other South Florida luxury residential property spans from the Atlantic to the Intracoastal and no other offers the breadth of amenities and services.




THE BEACH TOWER





SUNRISE TO SUNSET

Follow the sun—from the moment it rises above the vast horizon beyond your private Beach Club on the Atlantic, to the moment it sets warmly and dramatically in the western sky beyond your private Yacht Club on the Intracoastal. And, in the interim, enjoy an unparalleled quality of living within spaces thoughtfully designed for your curated lifestyle.









RHAPSODY IN BLUE

Meditation, recreation, rejuvenation, invigoration, or “all of the above” and so much more—whatever you desire, it’s all yours, at any time of day. Overlapping and just beyond The Beach Tower’s lavish, layered and expertly-serviced private amenities awaits a 250-foot stretch of naturally breathtaking beachfront splendor.



THE BEACH TOWER AMENITIES

AMENITIES

BEACH LEVEL

- Restaurant bar & grill with indoor & outdoor seating areas
- Lounge area on the beach with chaise lounges
- Beach storage
- Food & beverage service
- Water sports
- Wellness programming

LOBBY LEVEL

- Drop-off & arrival experience with impressive porte-cochère
- Oceanfront lobby
- 24/7 valet service
- Reception & concierge desk
- Signature Lissoni® sculptural staircase
- Clubroom – multipurpose social event space with prep kitchen
- North lounge & bar (serving daily continental breakfast)
- Lounge areas
- Outdoor terraces
- Oceanfront fitness center with outdoor fitness area

RESORT DECK LEVEL

- Two oceanfront infinity pools, north pool with sunken lounge
- Private cabanas available for sale
- Private poolside cabanas available for day use
- Lounge area
- Food & beverage service
- Garden grounds include covered pavilion, bar & lounge area, BBQ & pizza oven area, fire pit, outdoor fitness area, meditation area and more
- Bocce court
- Dog park

WELLNESS CENTER LEVEL

- Wellness concierge
- Juice & nutrition bar
- Treatment rooms
- Relaxation terrace
- Beauty salon & barbershop
- His & hers spa with locker rooms, showers, sauna, steam room, vitality pool, and relaxation lounge
- Business center with private offices, conference room, and coffee bar



THE RITZ-CARLTON
RESIDENCES
LUXURY HOMES





Whether you're seeking restorative tranquility or lively conversation, thoughtfully-designed outdoor amenity spaces like the airy pergola lounge deftly connect and intertwine with the idyllic natural surroundings, offering just the right setting.

Throughout these spaces, legendary Ritz-Carlton service, provided by a staff that knows you and anticipates your needs, makes sublime experiences a part of your daily life.



THE BEACH CLUB

Eat, drink, and relax at the private Beach Club, where Piero Lissoni's impeccably sophisticated design aesthetic deftly melds influences and sensibilities from South Florida to the Riviera, to Southeast Asia and beyond—where the transition from indoor to outdoor and the connection between you and nature are seamless.

The Beach Club features a world-class bar & grill with indoor and outdoor seating, a sprawling open lounge area on the beach with Lissoni-designed chaise lounges, grand private beach cabanas, health & wellness programming and more.













RESIDENCE FEATURES

- 112 residences ranging from 1,491 sq ft to 4,857 sq ft
- 4 penthouses ranging from 5,037 sq ft to 7,193 sq ft
- Spacious floorplans boasting ocean, city and Intracoastal views
- Private elevator lobby for each residence
- Service elevators
- Expansive terraces
- All residences delivered with flooring, kitchens & bathrooms
- Italian designed kitchens with top-of-the-line appliances
- Walk-in closets in all master bedrooms
- Laundry rooms with full-size washer and dryer
- Prewired for high-speed internet access and WiFi
- THG Paris bathroom faucets





Quality of design affects and enhances quality of life. Your home was masterfully and contemplatively designed, with rigorous attention to detail to provide you with the optimum setting to live your very best life.



Soak it all in. It's all yours.

THE MARINA TOWER






BEACH CLUB TO YACHT CLUB

The Ritz-Carlton Residences, Pompano Beach span an ocean-to-waterway property—providing access to a breadth and variety of transformative experiences unattainable elsewhere.

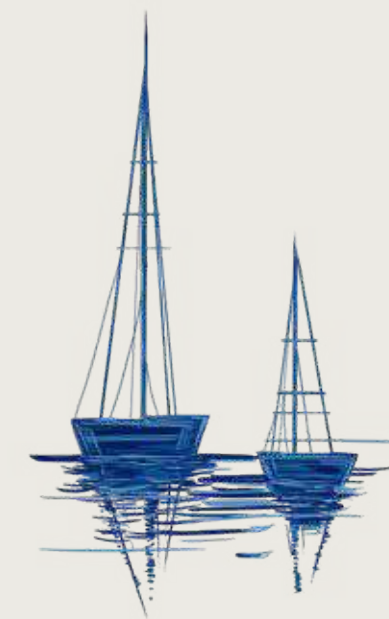
The Marina Tower's cascading, opulent amenities culminate at a private marina and lounge area, fire pit, a beautifully designed teak pier and private boat slips. From here, start your engines or set sail to explore and enjoy all the best that South Florida has to offer.







The Ritz-Carlton Residences, Pompano Beach feature a world-class marina and Yacht Club. Your Riva Aquarama will feel as at-home here as it would in Monaco, Capri or Saint-Tropez.



ALL-ACCESS

Homeowners at The Ritz-Carlton Residences, Pompano Beach are Yacht Club members, nautically connected to all of South Florida's greatest amenities and destinations accessible by vessel. From the piano bar in the grand, elegant club room, to the expansive sunset pool, to the dockside bar & lounge, memorable experiences await.

AMENITIES

MARINA LEVEL

- Private marina with 13 boat slips designed for large vessels, for sale exclusively to owners
- One pick-up and drop-off boat slip
- Water sports area with storage
- Boardwalk along Intracoastal Waterway
- Bar & lounge dockside entertainment area
- Pet spa room

LOBBY LEVEL

- Drop-off & arrival experience with impressive porte-cochère
- Reception & concierge desk
- 24/7 valet service
- Signature Lissoni® sculptural staircase
- The Yacht Club – multipurpose social event space including piano bar
- Sundowners happy hour bar
- Fitness center
- Wellness center feature his and hers spa with locker rooms and showers, individual and couples treatment rooms, sauna and steam room, and more
- Kids & teens club room

SUNSET DECK LEVEL

- Sunset pool
- Lounge area
- Food & beverage service
- BBQ & outdoor dining pergola
- Bocce court
- Pickleball court
- Fire pit
- Dog park
- Wellness lawn
- Kids play area

ENTERTAINMENT LEVEL

- Game area with pool tables, poker and card tables
- Virtual golf simulator with lounge
- Wine bar & lounge with 20-foot wide TV screen
- Programming event space
- Reading lounge



THE MARINA TOWER AMENITIES





Transformative dockside and poolside experiences are within moments of one another across the sprawling outdoor spaces beyond The Marina Tower's western façade. Gorgeous, Lissoni-designed cabanas and chaises lounges surround the vast, sumptuous pool and lushly-landscaped gardens.





THE YACHT CLUB

Lissoni designed The Yacht Club to take full advantage of the very special light and climate conditions throughout the South Florida days, nights and seasons along the Intracoastal Waterway. Exquisite materials and details finished in rich,

warm tones within layered, open and airy spaces form a fantastic setting for owners and their guests to enjoy the very best of times together.

The Yacht Club features a world-class bar & grill with indoor and outdoor seating, dockside lounge area with food & beverage services and a private boardwalk with 13 owners-only slips.









RESIDENCE FEATURES

- 84 residences ranging from 906 sq ft to 2,080 sq ft
- 4 penthouses ranging from 2,240 sq ft to 3,985 sq ft
- Spacious floorplans boasting ocean, city, and Intracoastal views
- All residences delivered with flooring, kitchens & bathrooms
- Expansive terraces
- Service elevator
- Italian designed kitchens with top-of-the-line appliances
- Walk-in closets in all master bedrooms
- Laundry rooms with full-size washer and dryer
- Prewired for high-speed internet access and WiFi
- THG Paris bathroom faucets



An aerial photograph of Pompano Beach, Florida, showing the coastline, beach, and city skyline. The ocean is a vibrant blue-green, and the beach is a wide stretch of golden sand. The city is built along the coast, with several high-rise buildings and a mix of residential and commercial structures. The sky is a clear, bright blue.

FLORIDA'S WARMEST WELCOME

Pompano Beach is a vibrant, multidimensional destination with a three mile stretch of pristine shoreline, restored dunes and tree-shaded playgrounds. The city is known for its excellent boating and fishing, accentuated by an offshore living coral reef accessible to scuba divers and snorkelers. Pompano Beach is named for the Pompano, a species of inshore tropical game fish which swims abundantly in the areas' warm Atlantic Ocean waters.



A TRANQUIL HAVEN ON THE GOLD COAST

Pompano Beach provides all—if not more—of the sublime natural beauty, the fulfilling lifestyle of any of South Florida's greatest shoreline cities. Yet, there is a degree of tranquility and a certain sense of harmony here which cannot be matched elsewhere. Of course, wonderful destinations like Boca Raton, Fort Lauderdale and Miami are always within easy reach of your optimally-situated home at The Residences.



The picturesque Hillsboro Inlet Lighthouse in nearby Hillsboro Beach marks the northern end of the Florida Reef and is one of the area's many beautiful and fascinating points of interest.



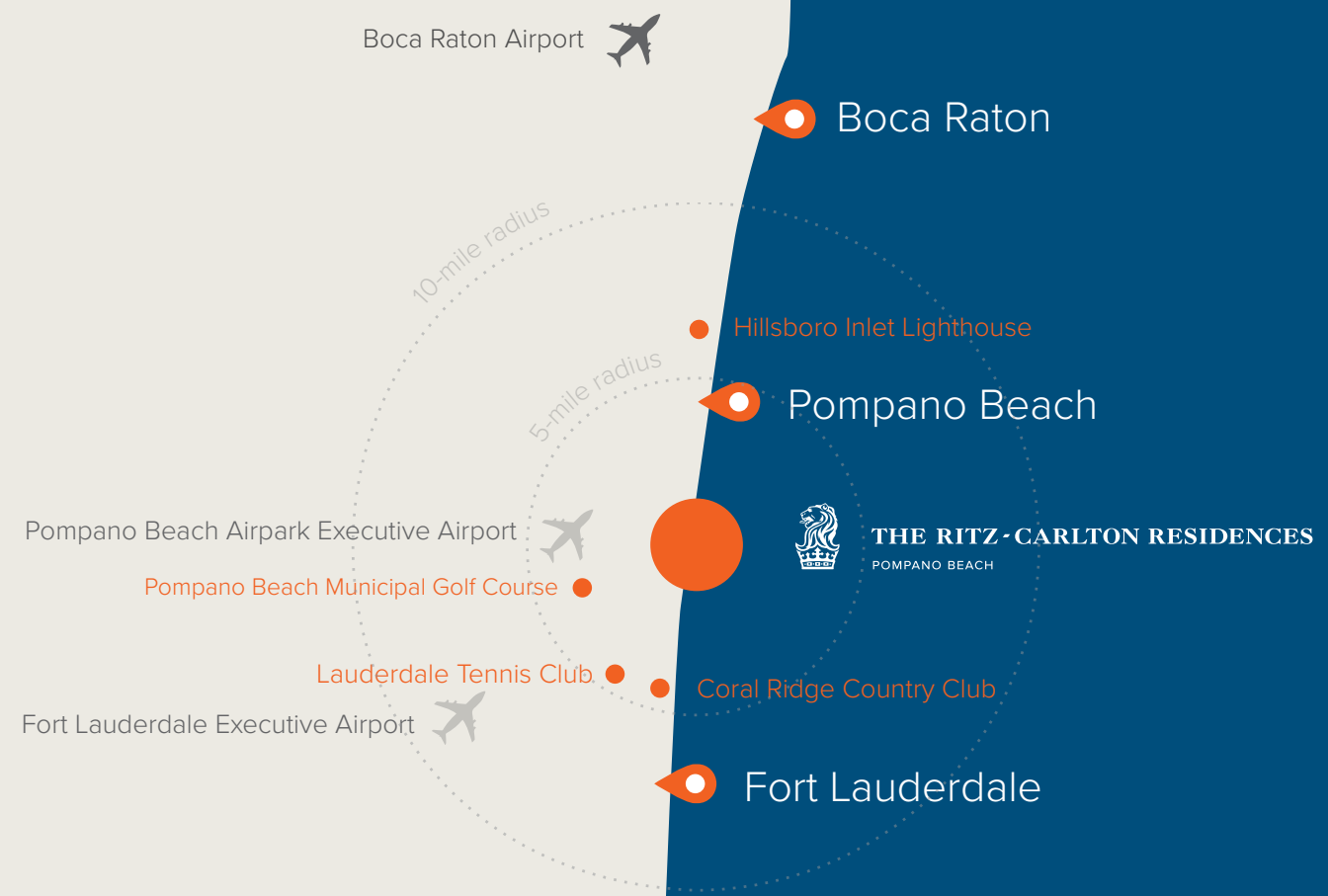
HIGHLIGHTS

Just beyond the sanctuary of your home at The Residences is a city that is vibrant, alluring, multidimensional and teeming with fine dining, retail, sightseeing, nature, art and cultural destinations. Gastronomic standouts range from the elevated Dune by Laurent Tourondel at Auberge Beach and Spa to the down-to-earth, bustling Foundry. Downtown's new, cutting-edge Innovation District is called that for a reason, as it is a forward-thinking, smart and exciting urban village poised for a bright future. And if it's lush, open green spaces you desire, McNab Park and Pompano Beach Park are verdant wonderlands, right in your hometown. Pompano Beach is a city perfectly suited to your curated lifestyle.

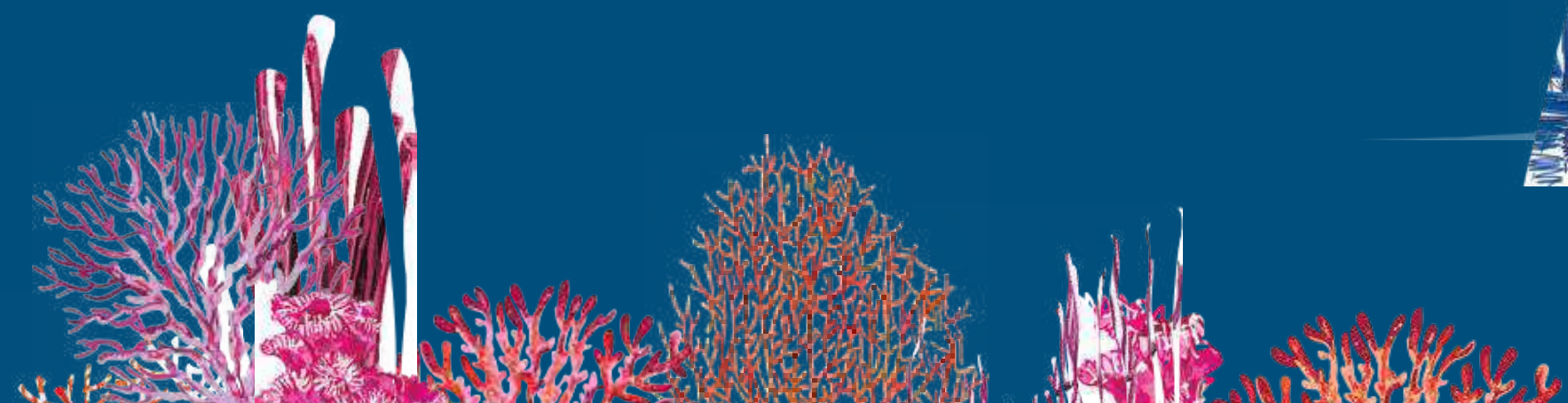
Always a fantastic city to reside in or to visit, Pompano Beach has enjoyed a continuous upward trajectory that has, over the years, propelled it to blue-chip status, with no end in sight for this ever-upward trend. This is a city that invests in itself and is ever-evolving in all of the most wonderful ways. Exciting developments coming in the near future include Riverside Promenade—a restaurant and retail complex, the reimagined and newly-designed shopping mecca Pompano Citi Centre, the mixed-use Harbourside at Hidden Harbour and, of course, the city's pièce de résistance, The Ritz-Carlton Residences, Pompano Beach.



Expansive, awe-inspiring, always-unique vistas that shift and change beautifully, around-the-clock amplify the bliss of living in this sublime sanctuary on South Florida's Gold Coast.



SOUTH FLORIDA METROPOLITAN AREA



VISIONARIES



The exemplary team behind The Ritz-Carlton Residences, Pompano Beach—comprised of Fortune International Group, Oak Capital, Lissoni & Partners, and Revuelta Architecture International—is one that is even greater than the sum of its parts. This wonderful synergy, along with a shared commitment to excellence, innovation, and uncompromising quality, is what will make dreams come true for owners of the magnificent homes in this incomparable collection.

DEVELOPER, SALES & MARKETING

FORTUNE INTERNATIONAL GROUP

Synonymous with excellence, quality, customer service, and an unwavering commitment to the highest standards of luxury, Fortune International Group has been a recognized leader in development, sales, and marketing since 1983. The company's prestigious portfolio includes many of the most prominent residential, mixed-use, condo-hotel, and office-condo projects in South Florida including Jade Signature, Jade Ocean, Jade Beach, Jade Residences at Brickell Bay, Auberge Beach Residences and Spa Fort Lauderdale, Hyde Resort & Residences Hollywood and The Ritz-Carlton Residences, Sunny Isles Beach, just to name a few.

Led by visionary founder Edgardo Defortuna, Fortune International Group has 18 offices around the world representing both its own projects and the exclusive sales and marketing of others throughout South Florida. With nearly 1,000 associates connected to South Florida, Buenos Aires, Hong Kong, Sao Paolo, Manhattan, Paris, and beyond, the company's ability to shape the industry is a driving force behind this landmark residential address.

DEVELOPER

OAK CAPITAL

Launched in 2020, Oak Capital was founded on the principals of integrity and innovation. Ricardo Dunin, Founder and CEO, possess over 35 years of real estate development experience in South Florida and internationally, making him steadfast in his commitment to quality and excellence. The company is focused on residential and commercial developments, investments and acquisitions. This includes the repurposing of complex and distressed properties, as well as the creation of new businesses, including entertainment concepts.

Oak Capital's mandate is to invest as a general partner in high yield developments and opportunistic residential, hospitality and commercial real estate transactions. The team has extensive track record having developed over \$2 billion in asset value across the US, Latin America and the Caribbean.

Past projects include The Ritz Carlton Residences in Miami Beach, a project that sold out at over \$500MM, The Ritz-Carlton Residences Singer Island, a project that sold out at over \$300MM, The Meridian, an ultra-modern building of 111 luxury lofts in South Beach and Le Sereno, a beachfront resort designed by Parisian designer Christian Liaigre in St. Barth.

DEVELOPER

FAIRWINDS GROUP

Fairwinds Group has a rich history of identifying, defining and redefining market needs. Andy Mitchell, Founder and CEO, has more than 45 years of experience doing so on a global scale. The company's focus from inception was to exceed customers' expectations with award-winning products.

Andy's start as divisional President of the largest furniture manufacturing group in the nation led to the formation of Fairwinds Group in 2003. Hotel development and real estate acquisition led to the development of the \$650MM Auberge Beach Residences and Spa.

Fairwinds Group is synonymous with exceptional design and meticulous attention to detail. Andy Mitchell's global perspective will add significantly to this storied oceanfront offering.



INTERIOR & LANDSCAPE DESIGN

PIERO LISSONI

With offices in Milan and New York, Lissoni & Partners have a thirty-year history in developing international projects in the fields of architecture, landscape, interior, product and graphic design, as well as acting as art director for a range of prestigious companies. Led by Piero Lissoni, the practice combines a range of expertise with a tailored approach that sets it apart, establishing a stylistic code and a visual identity that are clearly and instantly recognizable. The works of the practice are inspired by a sense of rigor and simplicity and are characterized by a regard to detail, coherence and elegance with particular attention to proportion and harmony.

Piero Lissoni is creative director for Alpi, B&B Italia, Boffi, Living Divani, Lema, Lualdi, Porro and Sanlorenzo, for whom he also designs an extensive range of products. Recognized as one of the masters of contemporary design, he has worked with many international brands including Alessi, Antrax, Atlas Concorde, Bonacina1889, Cappellini, Cassina, Cotto, De Padova, Fantini, Flos, Glas Italia, Golran, Illy, Janus et Cie, Kartell, Kerakoll, KN Industrie, Knoll, Nerosicilia, Olivari, Salvatori, Tecno and Viccarbe. Organized around different fields of intervention, the practice comprises Lissoni Casal Ribeiro for masterplans, landscape design and architecture, Lissoni Associati for interior design, product design, art direction and fit-outs, and Lissoni Graphx for graphic design, visual communication and brand identity, while Lissoni New York develops architecture and interior design projects for the American continent.

DESIGN ARCHITECT

REVUELTA ARCHITECTURE INTERNATIONAL

Revuelta Architecture International is a full-service architecture and planning firm, headquartered in historic Coconut Grove, Miami, Florida. Principal Luis O. Revuelta has overseen the design and coordination of some of the most significant mixed-use, urban developments in South Florida and beyond. His philosophy was built upon steadfast commitment to design quality and balance, as well as attention to detail. It is these tenets that have been the cornerstone of Revuelta Architecture International's growth and success.

The sinewy shapes of glazed balconies and the eye-catching vertical lines of façades are only parts of Revuelta's trademark. There is also his personal attention to the functional efficiency of the interiors as well as the proportion of the spaces. Revuelta summarizes the firm's vision with a simple, pragmatic statement: "The underlying philosophy behind our success has been our willingness to persevere in the pursuit of the architectural concepts and details we believe will make a project successful for our clients and their customers."

Revuelta's remarkably broad creative range is reflected in a diverse portfolio of world-class developments including Santa Maria, Bristol, Grovenor House, Jade, Mint, Ivy, Wind, Neo Vertika, 900 Biscayne Bay, Epic Residences and Hotel, Le Parc at Brickell, Novotel Brickell, Brickell Flatiron, The Bath Club, Azure, and Porto Vita.

TEAM

DEVELOPMENT TEAM

Fortune International Group,
Oak Capital &
Fairwinds Group

DESIGN ARCHITECT

Revuelta Architecture International

INTERIOR DESIGNER

Lissoni®

LANDSCAPE DESIGN

Concept Design by Lissoni®

SALES & MARKETING

Fortune Development Sales

BRANDING AND CREATIVE

DBOX

RENDERINGS

DBOX &
Berga & Gonzales



THE RITZ-CARLTON RESIDENCES

POMPANO BEACH

The Ritz-Carlton Residences, Pompano Beach are not owned, developed or sold by The Ritz-Carlton Hotel Company, L.L.C., or its affiliates ("Ritz-Carlton"). 1380 Ocean Associates, LLC uses The Ritz-Carlton marks under a license from Ritz-Carlton, which has not confirmed the accuracy of any of the statements or representations made herein.

ORAL REPRESENTATIONS CANNOT BE RELIED UPON AS CORRECTLY STATING REPRESENTATIONS OF THE DEVELOPER. FOR CORRECT REPRESENTATIONS, MAKE REFERENCE TO THE DOCUMENTS THAT ARE REQUIRED BY SECTION 718.503, FLORIDA STATUTES, TO BE FURNISHED BY A DEVELOPER TO A BUYER OR LESSEE. The Developer is 1380 Ocean Associates, LLC which has a right to use the trademark names and logos of Fortune International Group and Oak Capital. This is not an offer to sell, or solicitation of offers to buy, in states where such offer or solicitation cannot be made. The rendering contained herein is an artist impression, conceptual interpretation, proposed only and merely intended as illustration. No guarantee is made that the described features, services, amenities or facilities will be available or built. Developer reserves the right to make any modifications, revisions or withdrawals in its sole discretion and without prior notice. All improvements, design and construction are subject to first obtaining permits and approvals for same by the relevant authorities.

Piero Lissoni Portrait by Veronica Gaido, Living Divani images by Giorgio Possenti photography, Middle House Shanghai images by Edmon Leong







FORTUNE
INTERNATIONAL
— GROUP —
OAKCAPITAL